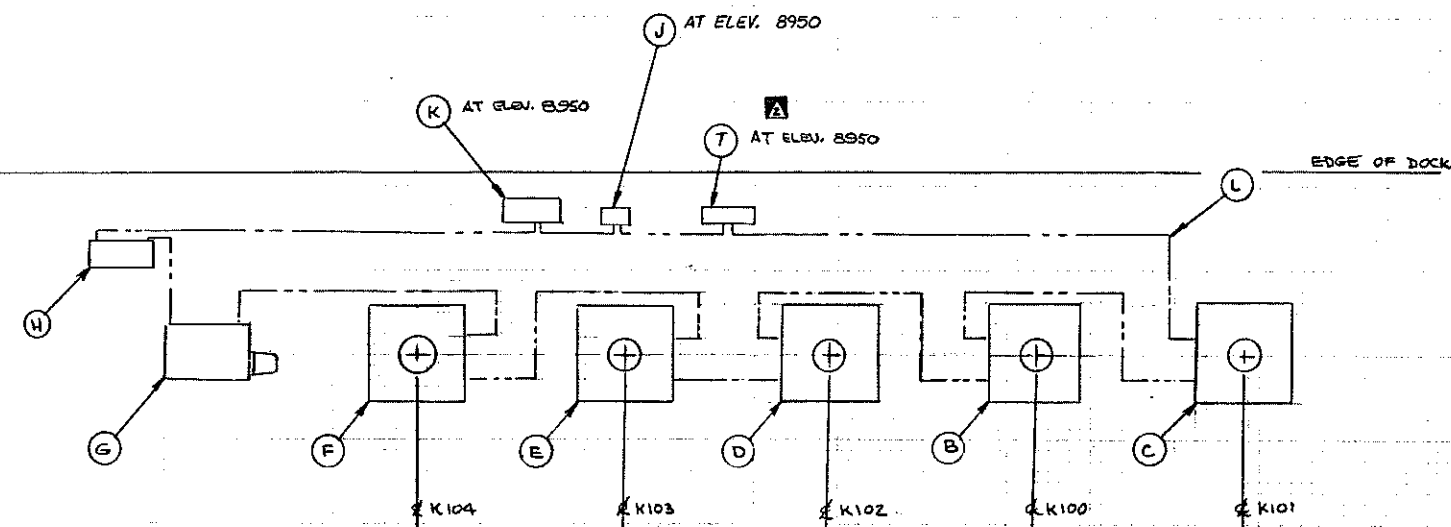


NOTE:
1. SEE DRAWING SK 12295 FOR PLACEMENT OF ARMS ON DOCK AND
REACH RANGE OF LOADING ARMS.



T	1	16629-19A	VACUUM BREAKER CONTROL VALVE ASSY.	
S	5	16629-127	REMOTE LUBE SYSTEM DETAIL	
R	1	388333	DAUIT -10" ARM	
P	1	16554-13A	DAUIT-12" ARM	
N	1	N100444	RETAINING CARRIAGE	
M	1	N100443	SAFETY HARNERS	
L	1	16629-25A	TUBING & CONDUIT DETAIL-DOCK	
K	1	3143690	PENDANT REMOTE CONTROL CABINET	
J	1	3143689	FIXED ELECTRIC CONTROL STATION	
H	1	16629-71A	MAIN POWER STATION	602
G	1	16629-83A	HYDRAULIC POWER UNIT	
F	1	16629-402A	12"X60'-0" FP-RCMA, L.H., OFFSET, REVERSE BO	27431
E	1	16629-502	10"X60'-0" FP-RCMA, L.H., REVERSE BO	21433
D	1	16629-202A	10"X60'-0" FP-RCMA, R.H.	21483
C	1	16629-102A	10"X6"X60'-0" FP-RCMA, R.H., OFFSET	
B	1	16629-2A	10"X60'-0" FP-RCMA, R.H., REVERSE BO	21433
A	1		FINAL ASSEMBLY	

ITEM	REQUIRED	PART NUMBER	DESCRIPTION, MATERIAL AND SPECIFICATION (ALL PURCHASED PARTS AS SPECIFIED OR EQUAL)	EST WEIGHT
<p>ALL THE INFORMATION IN THIS PROPOSAL IS CONFIDENTIAL AND HAS BEEN PREPARED FOR YOUR USE SOLELY IN CONNECTION WITH THE PURCHASE OF THE EQUIPMENT DESCRIBED. IT IS NOT TO BE DISCLOSED TO ANY OTHER PERSON WITHOUT EXPRESS WRITTEN PERMISSION OF FMC CORPORATION.</p> <p>ARTICLES MANUFACTURED IN ACCORDANCE WITH THESE DRAWINGS SHALL BE CONSIDERED FMC'S DESIGN AND MANUFACTURE AND NOT TO BE MANUFACTURED FOR THE USE OR SALE BY ANY OTHER PERSON OR CONCERN OR FOR MANUFACTURE'S USE OR SALE IDENTICAL ARTICLES OR PARTS THEREOF WITHOUT WRITTEN PERMISSION OF FMC CORPORATION.</p>				
<p>FMC FMC Corporation FMC Control Division 314 California Street</p>			<p>REF. NEXT ASST. SCALE NONE DATE 5-17-93 16629</p>	
<p>FINAL ASSEMBLY BANK OF 1-6', 3-10' & 1-12' X 60'-0" FULLY POWERED RCMA'S</p>			<p>DRAWN GALL CHKD APPR SUBST</p>	